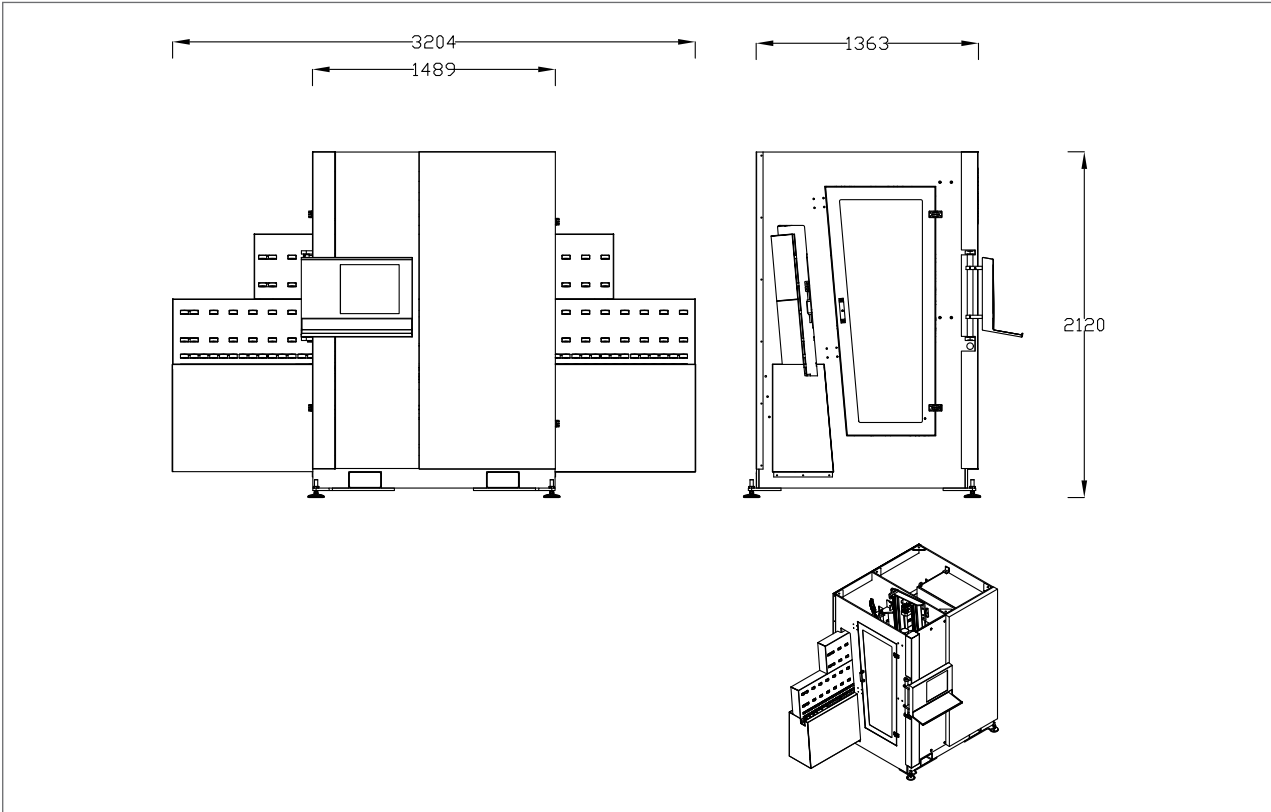
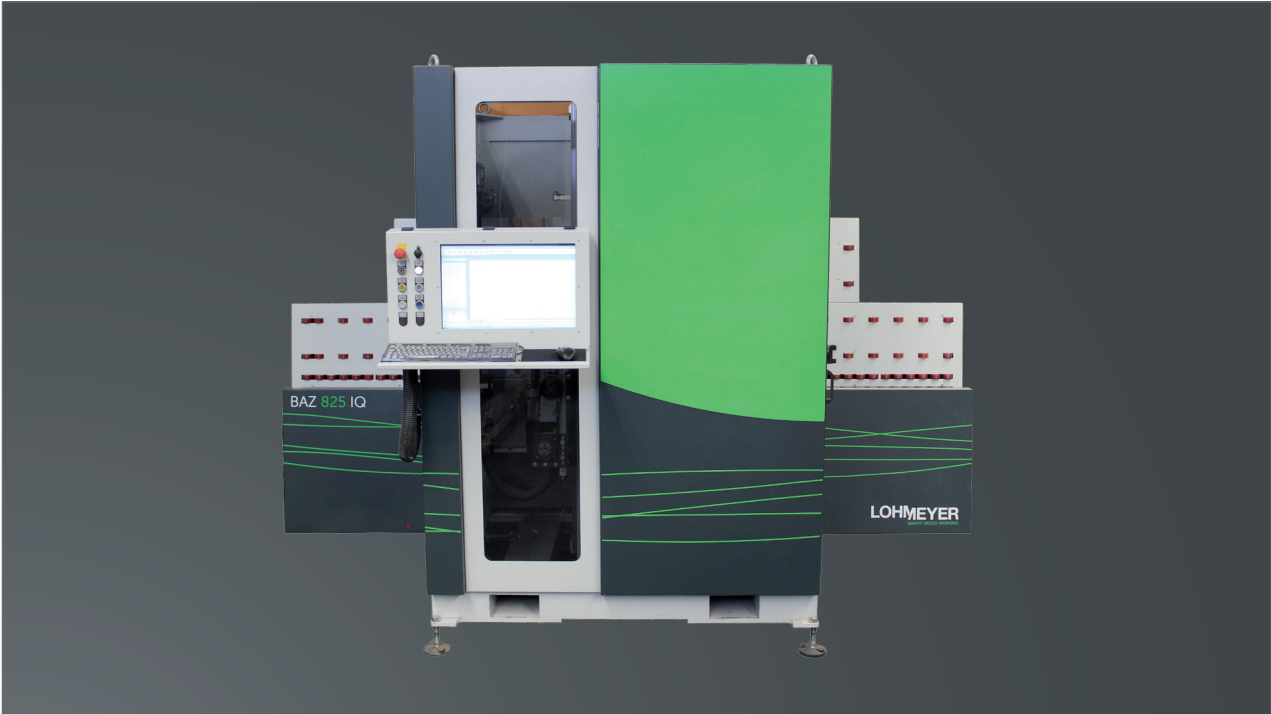


CNC Machining Center BAZ 825 IQ



Basic Machine

- rigid and compact machine base due to vertical design
- 3 CNC controlled axes in X, Y and Z direction
- freely positionable CNC controlled workpiece clamp with automatic and smart reclamping technology
- vacuum-free fixing of the workpiece with strong down-holder in the processing area
- 22" colour screen with movable operating panel
- due to space underneath the workpiece through routing and through drilling are possible without any set up time
- control Beckhoff
- easy repositioning of the machine due to lifting device



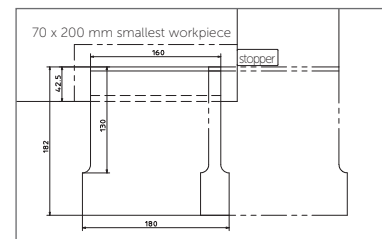
Aggregates

Routing Aggregate

- routing motor with collet ER32 with pneumatic forward stroke
- 5 kW HSD spindle
- max. rotation speed 12,000 rpm

Intelligent Collet System

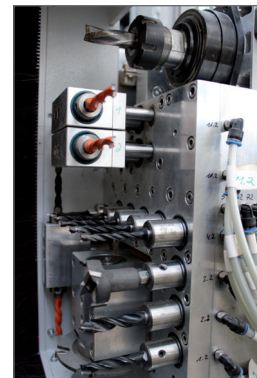
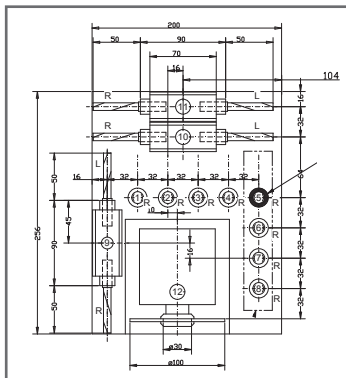
- automatic reclamping in case of tool collision
- The collet gets automatically into position after the determination of the workpiece processing



Drilling unit

- 8 individually selectable vertical spindles
- 2 + 2 horizontal spindles in X direction
- 1 + 1 horizontal spindles in Y direction
- integrated grooving saw aggregate d=100mm

- max. rotational speed: 3,000 rpm
- stroke: 80mm
- max. machining depth: 40mm



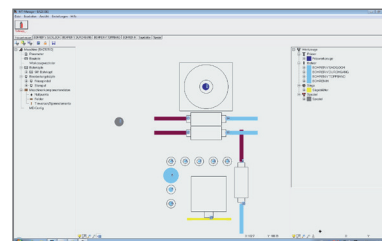
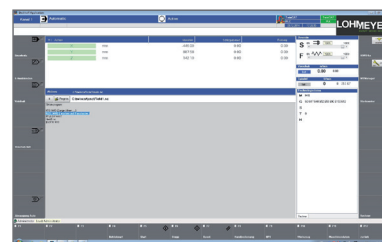
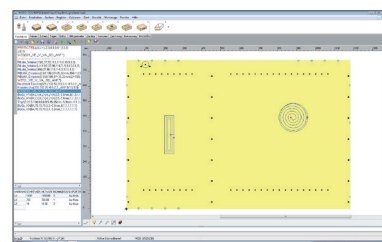
Software

HMI Surface

- Beckhoff
- automatic
- manual
- error
- Windows

WOP Programming

- control: easy operation due to softkeys with graphics NC-Hops – for a shop floor oriented programming or office programming
- Windows based software
- machine data registration and analysis through time and event counter
- simulation of the processing order determined in the NC programme with 3D CNC simulator
- 3D visualisation of woodWOP programmes
- interface for CAD data import



Security and Safety

- CE Regulation according to the EC Machinery Directive

Documentation

- Documentation and maintenance instructions in print and CD-ROM version

Technical Data

Traveling speeds	X axis	5-70 m/min
	Y axis	5-50 m/min
	Z axis	5-15 m/min
Workpiece dimensions	length	200 mm - 2,500 mm (more is possible, if customer provides workpiece support at site)
	width	70 mm - 850 mm
	thickness	12 mm - 60 mm
	weight	max. 40 kg
Routing aggregate	motor	5 kW
	supply voltage	400 V
	max. rotation speed	12,000 rpm at 200 Hz
	max. tool holder diameter	20 mm
	max. tool diameter	35 mm
	max. tool length	70 mm
	collet	ER32
Drilling unit	pneumatic forward stroke (Z direction)	80 mm
	max. drilling depth	40 mm
	no. of vertical drills (single spindles)	8
	rotation direction of single spindles	right
	no. of horizontal drills (double spindles)	6 (3)
	rotation direction double spindles	right / left
	rotation speed	3,000 rpm
	driving power	2.2 kW
	diameter of drill clamp	10 mm
	max. drill diameter	35 mm
Dust extraction	pipe diameter	100 mm
	connection point	at the processing unit
Power supply	operating voltage	400 V – 3 phases – 50 HZ
	total power	12.2 kW
	connection power	ca 30 kW /63 A
Compressed air	operating pressure	6 bar
Machine dimensions	layout including support surfaces on the left and right side (LxWxH)	3,210 x 1,700 x 2,150 mm
	Main machine (LxWxH)	1,500 x 1,500 x 2,150
	weight, net	2,500 kg